



workflowsRI is funded by the National Science Foundation (NSF) under grants number 2016610, 2016619, and 2016682



# workflowsRI

Towards an Infrastructure for Enabling  
Systematic Development and Research  
of Scientific Workflow Management Systems



## workflows now...

can analyze terabyte-scale data sets

be composed of millions of individual tasks

require coordination between heterogeneous tasks

manage tasks that execute for milliseconds to hours

can process data streams, files, and data placed in object stores

*workflows are becoming more  
complex and require more  
sophisticated workflow  
management  
capabilities*

# WMS development is ad hoc!

*there has been a profusion of different,  
yet similar in functionality, systems*

<https://s.apache.org/existing-workflow-systems>

a community list of WMSs includes **280+** systems

<https://github.com/pditommaso/awesome-pipeline>

a curated list of pipeline toolkits includes **140+** systems



*“there is a pressing need to bring the **workflows community together** (both from academia and industry), with the goal of defining a **rigorous methodology** for **characterizing current and upcoming** WMS capabilities, and **supporting the innovations** necessary to address the range of imminent workflows challenges”*

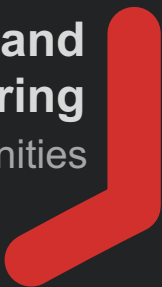


## workflows

researchers  
developers

## science and engineering

communities



## cyberinfrastructure

research computing centers  
national CI providers



## surveys & workshops

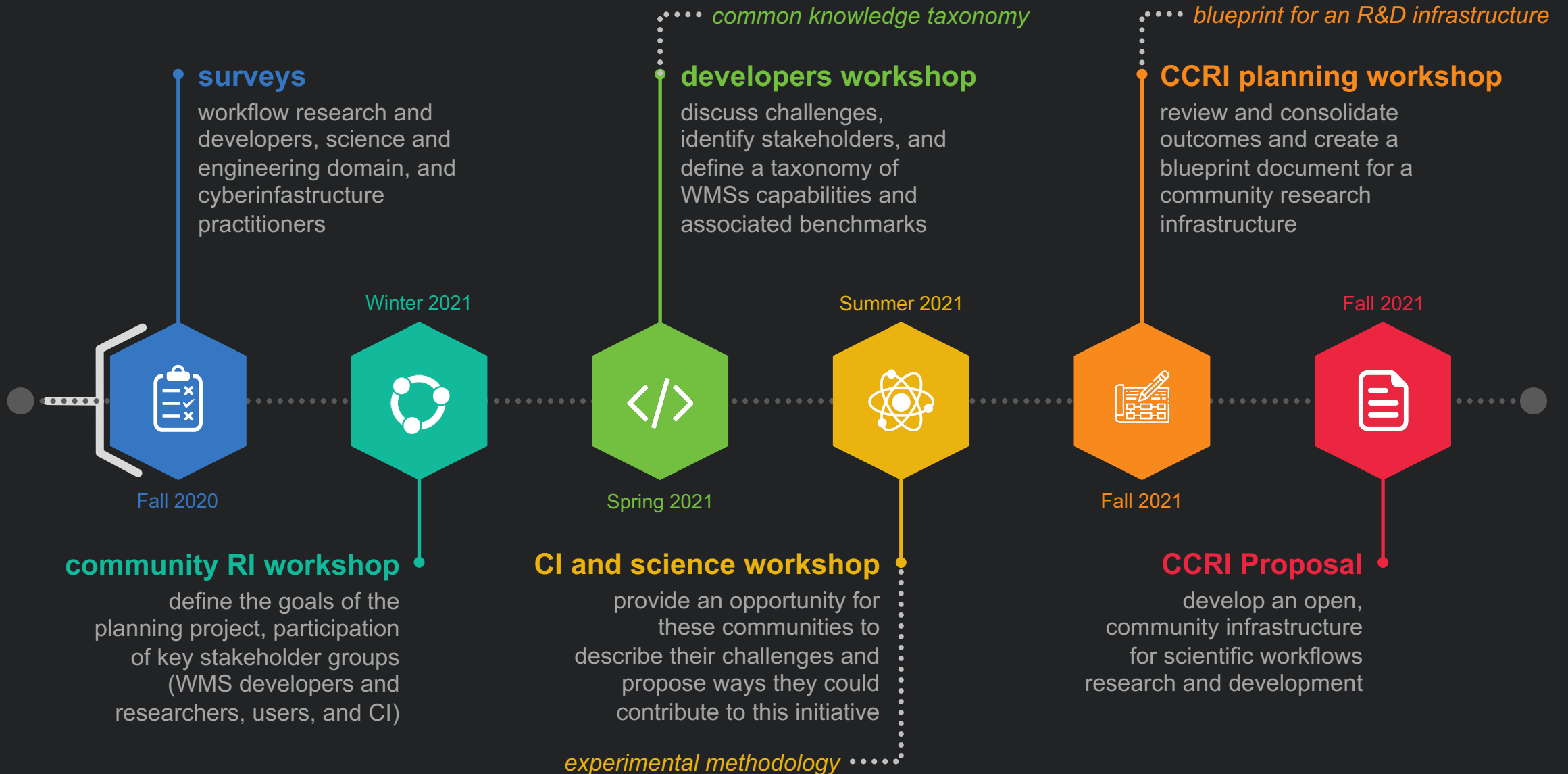
● common knowledge  
taxonomy

● experimental  
methodology

● WMS  
inventory

● blueprint for an  
R&D infrastructure







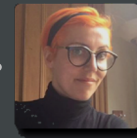
**Daniel S. Katz**  
Parsl



**Douglas Thain**  
Makeflow



**Rosa Filgueira**  
Dispel4Py



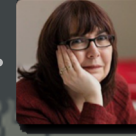
**Bertram Ludascher**  
YesWorkflow



**Shantenu Jha**  
RADICAL



**Carole Globe**  
Taverna



**Justin Wozniak**  
Swift



**Michael Crusoe**  
CWL



**Lavanya Ramakrishnan**  
Tigres



**Thomas Fahringer**  
ASKALON



**Anubhav Jain**  
FireWorks



**Paolo Di Tomasso**  
Nextflow



**Ewa Deelman**  
Pegasus



**Rosa Badia**  
COMPSs



**Ilkay Altintas**  
Kepler



**Marta Mattoso**  
SciCumulus/C<sup>2</sup>



**David Abramson**  
Nimrod/K



board of experts

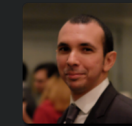


workflowsRI is funded by the National Science Foundation (NSF) under grants number 2016610, 2016619, and 2016682

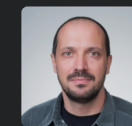
Towards an Infrastructure for Enabling Systematic Development and Research of Scientific Workflow Management Systems

[getinvolved@workflowsri.org](mailto:getinvolved@workflowsri.org)

<https://workflowsri.org>



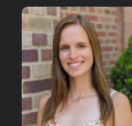
**Rafael Ferreira da Silva**  
Principal Investigator



**Henri Casanova**  
Co-Principal Investigator



**Kyle Chard**  
Co-Principal Investigator



**Tainã Coleman**  
Graduate Research Assistant

get involved



our team